

# Water Quality Meters

## YSI Professional Series

YSI introduces the Professional Series instruments. The easiest, most versatile handheld solution for spot sampling in the field or lab. Simply choose the Pro Series model, cable length, and probes that are right for your specific application – from aquaculture to surface water to wastewater and more.

### FEATURES

- Each instrument provides multiple probe or cable options.
- Detachable cables and probes mean less downtime.
- Backlit keypad and display (Pro Plus) or glow-in-the-dark keypad for low light measurements.
- IP67 rated.
- 3-Year warranty on instrument.  
2-Year warranty on cables.  
1-Year warranty on probes.  
6-Month warranty on Galvanic DO probes.

### Professional Plus

The flagship of the Professional Series, YSI Professional Plus accommodates any combination of Pro Series probe, cable, and accessory. This compact handheld allows you to instantly change probes and cables. You determine what you want the instrument to measure and display.

Choose your own combination of the various parameters:

- Ammonium, Chloride, Conductivity, Dissolved Oxygen (DO), Nitrate, Oxidation Reduction Potential (ORP), pH, Temp.
- 2,000 data-set memory with GLP event logging
- Interval or single-event logging capability
- Easy-to-use software to manage all your data including user-specific site ID (included with purchase of instrument)



#### Pro1020

Any one ISE

(Ammonium, Chloride, Nitrate, ORP, pH, pH/ORP combination probe) and DO. Choice of Galvanic or Polarographic probe.



#### Pro1030

Any one ISE

(Ammonium, Chloride, Nitrate, ORP, pH, pH/ORP combination probe) and Conductivity.



#### Pro2030

DO and Conductivity.



#### Pro10

Any one ISE (Ammonium, Chloride, Nitrate, ORP, pH, pH/ORP combination probe) on the ISE cable or a combination of any two ISEs on the ISE/ISE cable (excluding pH/ORP combination probe).



#### Pro20

DO

**CALL GEOTECH TODAY (800) 833-7958**

**Geotech Environmental Equipment, Inc.**

2650 East 40th Avenue • Denver, Colorado 80205

(303) 320-4764 • (800) 833-7958 • FAX (303) 322-7242

email: sales@geotechenv.com website: www.geotechenv.com

# Water Quality Meters

## YSI Professional Series

### ORDER SELECTION GUIDE

As easy as 1, 2, 3

#### STEP 1 – SELECT INSTRUMENT

Professional Plus  
Pro10 ISE  
Pro20 DO  
Pro1020 ISE/DO  
Pro1030 ISE/Conductivity  
Pro2030 DO/Conductivity

#### STEP 2 – SELECT CABLE<sup>1</sup>

(All cables include temperature)

1 m cable for ISE  
4 m cable for ISE  
10 m cable for ISE  
20 m cable for ISE  
30 m cable for ISE  
1 m cable for DO  
4 m cable for DO  
10 m cable for DO  
20 m cable for DO  
30 m cable for DO<sup>2</sup>  
1 m cable for conductivity  
4 m cable for conductivity  
10 m cable for conductivity  
20 m cable for conductivity  
30 m cable for conductivity  
1 m cable for ISE/ISE  
4 m cable for ISE/ISE  
10 m cable for ISE/ISE  
20 m cable for ISE/ISE  
30 m cable for ISE/ISE  
1 m cable for ISE/DO  
4 m cable for ISE/DO  
10 m cable for ISE/DO  
20 m cable for ISE/DO  
30 m cable for ISE/DO  
1 m cable for ISE/conductivity  
4 m cable for ISE/conductivity  
10 m cable for ISE/conductivity  
20 m cable for ISE/conductivity  
30 m cable for ISE/conductivity  
1 m cable for DO/conductivity  
4 m cable for DO/conductivity  
10 m cable for DO/conductivity  
20 m cable for DO/conductivity  
30 m cable for DO/conductivity  
1 m cable with 4 ports  
4 m cable with 4 ports  
10 m cable with 4 ports  
20 m cable with 4 ports  
30 m cable with 4 ports

#### STEP 3 – SELECT PROBE<sup>1</sup>

Galvanic DO  
Polarographic  
pH (ISE)  
ORP (ISE)  
pH/ORP combination (ISE)<sup>3</sup>  
Amplified pH<sup>4</sup>  
Amplified pH/ORP<sup>4</sup>  
Ammonium (ISE)  
Chloride (ISE)  
Nitrate (ISE)  
BOD probe (self stirring)

<sup>1</sup> Cables with conductivity include probe (no need to order separate conductivity probe).

<sup>2</sup> Special order cables up to 100 meters are available with DO/temperature only.

<sup>3</sup> Not compatible with ISE/ISE cables.

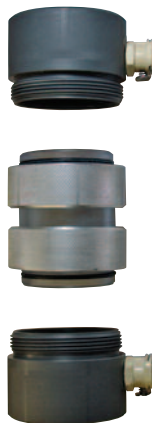
<sup>4</sup> Extension adapter may be required.



Flow Cell with spike



Pro Series  
single or dual  
Flow Cell assembly



Quatro 6850  
Flow Cell assembly

### QUICK SELECTION GUIDE

	Professional Plus	Pro 10	Pro 20	Pro 1020	Pro 1030	Pro 2030
Temperature	✓	✓	✓	✓	✓	✓
Dissolved Oxygen (% and mg/L)	✓		✓	✓		✓
Conductivity	✓				✓	✓
Specific Conductance	✓				✓	✓
Salinity	✓				✓	✓
TDS	✓				✓	✓
pH (Standard or Amplified)	✓	✓		✓	✓	
ORP (mV) (Standard or Amplified)	✓	✓		✓	✓	
Ammonium	✓	✓		✓	✓	
Chloride	✓	✓		✓	✓	
Nitrate	✓	✓		✓	✓	
USB	✓	✓				
Memory (1000 data sets w/GLP)	✓					
Memory (50 data sets)		✓	✓	✓	✓	✓
DO Cap Membranes	✓		✓	✓		✓
Detachable Probes	✓	✓	✓	✓	✓	✓
GLP File System	✓					
Barometer	✓		✓	✓		✓



4-Port Bulkhead with four user replaceable sensors  
2 ISE,  
1 Cond/Temp,  
1 DO

# Water Quality Meters

## YSI Professional Series

### SPECIFICATIONS

#### SYSTEM WITH CABLE AND PROBES

<b>Dissolved Oxygen (% saturation)</b>	<b>Sensor Type</b>	Polarographic or Galvanic (user selectable)
	<b>Range</b>	0 to 500% air saturation
	<b>Accuracy</b>	0 to 200% ( $\pm 2\%$ of the reading or $\pm 2\%$ air saturation, whichever is greater) 200 to 500% ( $\pm 6\%$ of the reading)
	<b>Resolution</b>	1% or 0.1% air saturation (user selectable)
<b>Dissolved Oxygen (mg/L)</b>	<b>Sensor Type</b>	Polarographic or Galvanic (user selectable)
	<b>Range</b>	0 to 50 mg/L
	<b>Accuracy</b>	0 to 20 mg/L ( $\pm 2\%$ of the reading or $\pm 0.2$ mg/L, whichever is greater) 20 to 50 mg/L ( $\pm 6\%$ of the reading)
	<b>Resolution</b>	0.1 or 0.01 mg/L (user selectable); 0.1% air saturation
<b>Temperature</b>	<b>Range</b>	-5 to 55°C (0 to 45°C; DO compensation range for mg/L)
	<b>Accuracy</b>	$\pm 0.3^\circ\text{C}$
	<b>Resolution</b>	0.1°C
	<b>Units</b>	C, F, K
<b>Conductivity</b>	<b>Sensor Type</b>	4-electrode cell with autoranging
	<b>Range</b>	0 to 200 mS (auto range)
	<b>Accuracy</b>	$\pm 0.5\%$ of reading or 0.001 mS/cm, whichever is greater (4 m cable) $\pm 1\%$ of reading or 0.001 mS/cm, whichever is greater (30 m cable)
	<b>Resolution</b>	0.0001 to 0.1 mS (range dependent)
<b>Salinity</b>	<b>Sensor Type</b>	Calculated from conductivity and temperature
	<b>Range</b>	0 to 70 ppt
	<b>Accuracy</b>	$\pm 1.0\%$ of reading or 0.1 ppt, whichever is greater
	<b>Resolution</b>	0.1 ppt
<b>pH</b>	<b>Sensor Type</b>	Glass combination electrode
	<b>Amplified Sensor Type</b>	Ribbon junction and glass combination electrode
	<b>Range</b>	0 to 14 units
	<b>Accuracy</b>	$\pm 0.2$ units
<b>Ammonium*</b>	<b>Range</b>	0 to 200 mg/L-N, 5 to 30°C
	<b>Accuracy</b>	$\pm 10\%$ of reading or 2 mg/L, whichever is greater (from 0 to 10 mg/L)
	<b>Resolution</b>	0.001 to 1 mg/L-N (range dependent)
	<b>Depth</b>	15 m maximum
<b>Nitrate*</b>	<b>Range</b>	0 to 200 mg/L-N, 5 to 30°C
	<b>Accuracy</b>	$\pm 10\%$ of reading or 2 mg/L, whichever is greater (from 0 to 10 mg/L)
	<b>Resolution</b>	0.001 to 1 mg/L-N (range dependent)
	<b>Depth</b>	15 m maximum
<b>Chloride*</b>	<b>Range</b>	0 to 1000 mg/L-N, 5 to 40°C
	<b>Accuracy</b>	$\pm 15\%$ of reading or 5 mg/L, whichever is greater
	<b>Resolution</b>	0.001 to 1 mg/L (range dependent)
	<b>Depth</b>	15 m maximum
<b>ORP</b>	<b>Sensor Type</b>	Platinum button
	<b>Amplified pH/ORP Sensor Type</b>	Ribbon junction and platinum button combination electrode
	<b>Range</b>	-1999 to +1999 mV
	<b>Amplified Range</b>	-999 to 999 mV
	<b>Accuracy</b>	$\pm 20$ mV (in redux standards)
	<b>Resolution</b>	0.1 mV
<b>Total Dissolved Solids (TDS)</b>	<b>Sensor Type</b>	Calculated from conductivity and temperature
	<b>Range</b>	0 to 100 g/L TDS constant range 0.30 to 1.00 (0.64 default)
	<b>Accuracy</b>	Dependent on conductivity and temperature values
	<b>Resolution</b>	0.001, 0.01, 0.1 g/L
<b>Barometer</b>	<b>Range</b>	500 to 800 mmHg
	<b>Accuracy</b>	$\pm 5$ mmHg within $\pm 15^\circ\text{C}$ of calibration point
	<b>Resolution</b>	0.1 mmHg
	<b>Units</b>	mmHg, inHg, KPa

\* For freshwater only

### YSI LAB DOCK

The Lab Dock is designed to hold a Pro Series instrument and BOD bottle, with BOD probe, together on the bench-top to provide a small footprint. It can also be used without the BOD bottle holder as a convenient instrument dock.

The Lab Dock is ideal for the Professional Plus or Pro20 instrument with a BOD probe. The dock conveniently holds the BOD bottle on either the left or right side in order to provide a stable calibration environment and to store the probe. The instrument sets easily on the Lab Dock and won't wobble, even when pressing the instrument's keys.

#### Geotech Environmental Equipment, Inc.

2650 East 40th Avenue • Denver, Colorado 80205  
 (303) 320-4764 • (800) 833-7958 • FAX (303) 322-7242  
 email: sales@geotechenv.com website: www.geotechenv.com